

Fixing A Hole

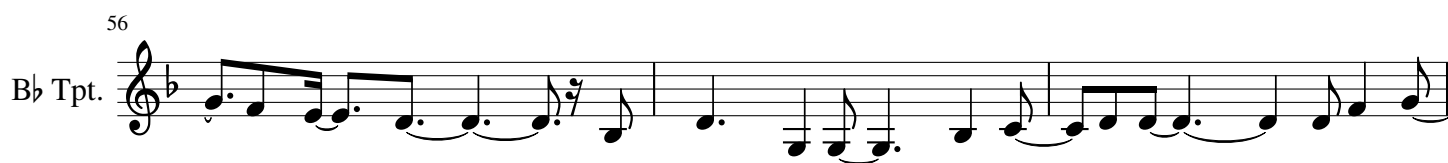
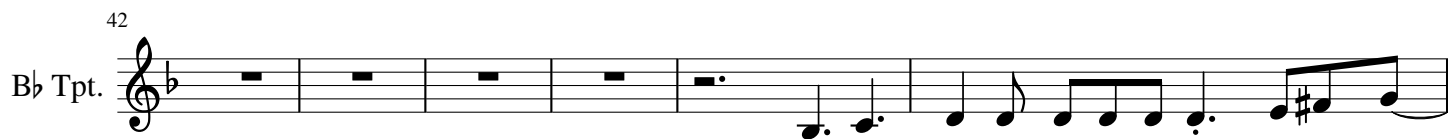
Adapted by Hot Band World

Lennon-McCartney

$\text{♩} = 100$

$\text{♩} = 160$





75

B \flat Tpt.

The musical notation for the B \flat Tpt. part begins at measure 75. The staff is in treble clef with a key signature of one flat (B \flat). The notation consists of the following measures:

- Measure 75: A quarter note G \flat (below the staff), an eighth note A \flat (below the staff), a dotted quarter note B \flat (below the staff), and a quarter note C \flat (below the staff), all beamed together.
- Measure 76: A quarter rest, followed by a quarter note D \flat (below the staff).
- Measure 77: A whole rest.
- Measure 78: A whole rest.
- Measure 79: A whole rest.
- Measure 80: A whole rest.
- Measure 81: A whole rest.
- Measure 82: A whole rest.
- Measure 83: A whole rest.
- Measure 84: A whole rest.
- Measure 85: A whole rest.
- Measure 86: A whole rest.
- Measure 87: A whole rest.
- Measure 88: A whole rest.
- Measure 89: A whole rest.
- Measure 90: A whole rest.
- Measure 91: A whole rest.
- Measure 92: A whole rest.
- Measure 93: A whole rest.
- Measure 94: A whole rest.
- Measure 95: A whole rest.
- Measure 96: A whole rest.
- Measure 97: A whole rest.
- Measure 98: A whole rest.
- Measure 99: A whole rest.
- Measure 100: A whole rest.