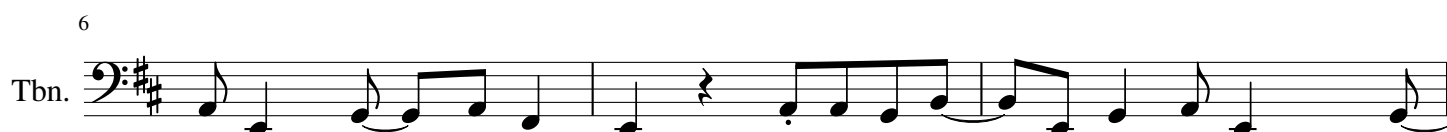
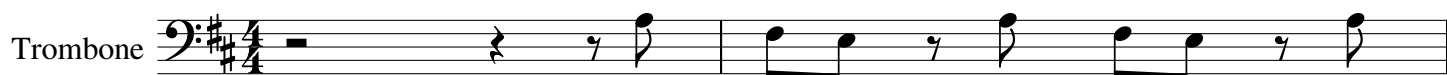


Good Morning, Good Morning

Adapted by Hot Band World

Lennon-McCartney

♩ = 125



32

Tbn.

3

3

3

3

34

Tbn.


36

Tbn.

3 3 3

39

Tbn.



42

Tbn.

The staff for Tuba and Euphonium (Tbn.) begins with a treble clef and a key signature of one sharp (F#). The music starts with a half note G4, followed by a quarter note A4, a quarter note B4, and a quarter note C5. This is followed by a quarter rest, then a half note G4. The next measure contains a half note G4. The following measure has a quarter note G4, a quarter note A4, a quarter note B4, and a quarter note C5. The next measure has a quarter note G4, a quarter note A4, a quarter note B4, and a quarter note C5. The final measure has a quarter note G4, a quarter note A4, a quarter note B4, and a quarter note C5.

45

Tbn.



Staff 45 for Tuba and Euphonium (Tbn.). The staff is in bass clef with a key signature of two sharps (F# and C#). The music begins with a whole note G2, followed by a quarter note A2, and a quarter note B2. The next measure contains a dotted quarter note G2, an eighth note F#2, and a quarter note E2. The third measure has a quarter note D2, a quarter note C#2, and a quarter note B2. The fourth measure consists of a quarter rest, followed by an eighth note G2, an eighth note F#2, and a quarter note E2. The fifth measure has a quarter note D2, a quarter note C#2, and a quarter note B2. The sixth measure contains a quarter note A2, a quarter note G2, and a quarter note F#2. The seventh measure has a quarter note E2, a quarter note D2, and a quarter note C#2. The eighth measure consists of a quarter rest, followed by an eighth note D2, an eighth note C#2, and a quarter note B2. The ninth measure has a quarter note A2, a quarter note G2, and a quarter note F#2. The tenth measure contains a quarter note E2, a quarter note D2, and a quarter note C#2. The staff ends with a double bar line.

48

Tbn.



51

Tbn.

51

Tbn.